



160 Watt Photovoltaic Module

EVERLIGHT ELM-160P Series

EVERLIGHT ELM-160P is designed specifically for on-grid residential systems where a combination of high module efficiency and outstanding appearance is desirable. Utilizing 72 cells (125 x 125mm) configured geometrically in a 12 x 6 matrix connected in series. An anti-reflective coating, provides a uniform blue color and increases the absorption of light in all weather conditions. Designed to withstand rigorous wither conditions; the multifunctional junction box avoids from eroding by moisture or humidity; torsion –proof, anodized and corrosion –free aluminum frame tightened by inner corner without using any screws, making EVERLIGHT ELM-160P great appearance and less power decrease during warrant period.

| TYPICAL ELECTRICAL CHARACTERISTICS | | | |
|------------------------------------|--|------------|------------|
| | ELM-160P-1 | ELM-160P-2 | ELM-160P-3 |
| Maximum power | 150W | 160W | 170W |
| Voltage at max. power | 34.4 V | 34.4 V | 34.4 V |
| Current at max. power | 4.36A | 4.65A | 4.94A |
| Open circuit voltage | 43.4V | 43.4V | 43.4V |
| Short circuit current | 4.94A | 5.27A | 5.60A |
| Temperature coefficient of Isc | (0.065±0.015)%/°C | | |
| Temperature coefficient of Voc | -(160±20)mV/°C | | |
| Temperature coefficient of power | -(0.5±0.05)%/°C | | |
| Max. oper. voltage | 1000V | | |
| Operating temperature | -40/+85 °C | | |
| Resistance | 227g steel ball down from 1m height and 60m/s wind | | |

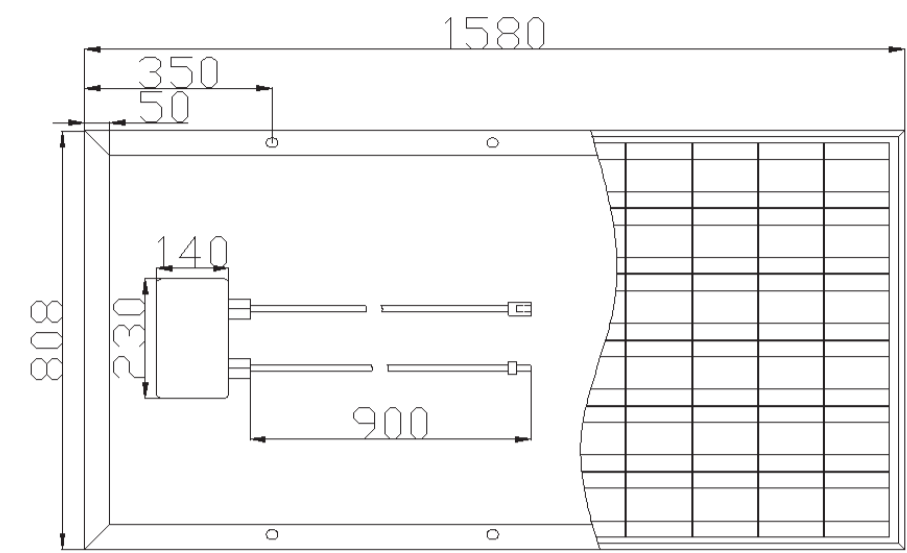
| PERFORMANCE | | | |
|-------------------|---|------------|------------|
| Model | ELM-160P-1 | ELM-160P-2 | ELM-160P-3 |
| Rated power | 150W | 160W | 170W |
| Tolerance | ±5% | ±5% | ±5% |
| Module efficiency | 14.0% | 15.0% | 15.9% |
| Nominal voltage | 24V | 24V | 24V |
| Warranty | Pm is not less than 90% in 10 years and 80% in 25 years | | |

| MECHANICAL CHARACTERISTICS | |
|----------------------------|---|
| Dimensions(mm) | 1580×808×50 |
| Overall tolerances | ±3mm |
| Weight(Kg) | 16.0 |
| Frame | Clear anodized aluminum alloy type 6063T6. Silver Universal frame. |
| Solar Cells | 72 cells (125 x 125mm) configured geometrically in a 12 x 6 matrix connected in series. |

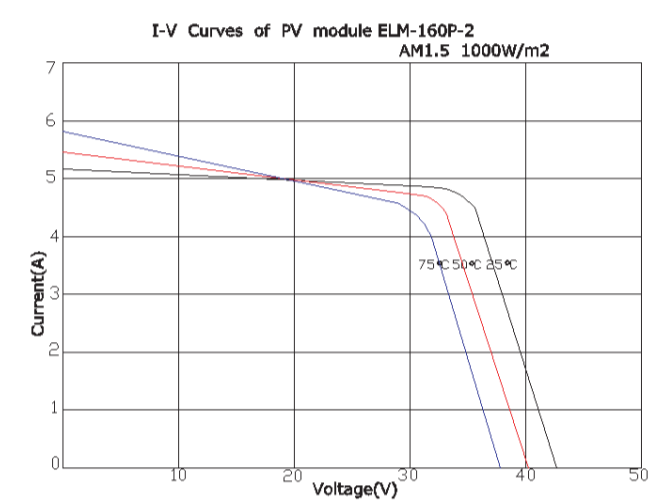
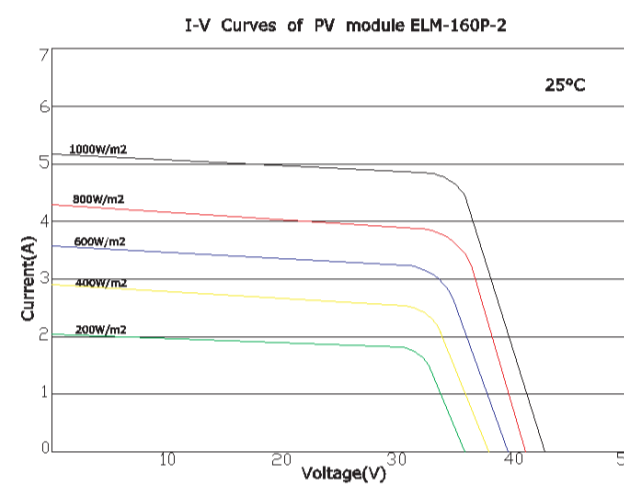
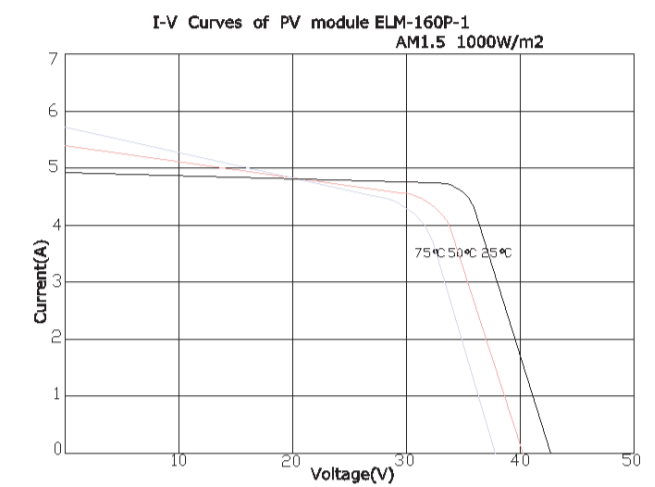
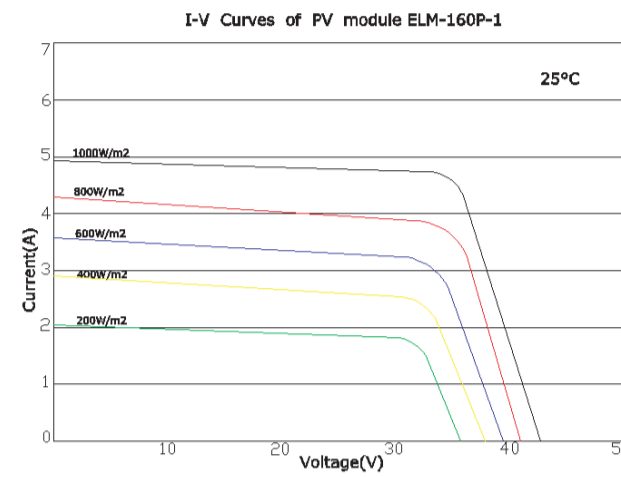
Test conditions: @STC 1000W/m², AM1.5, 25°C

Product Standards: CE certified, TÜV according to IEC 61215 expected by Oct. 2007.

Module Diagram

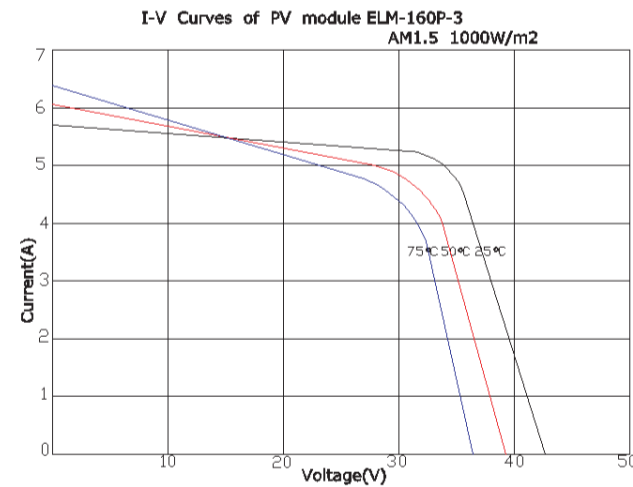
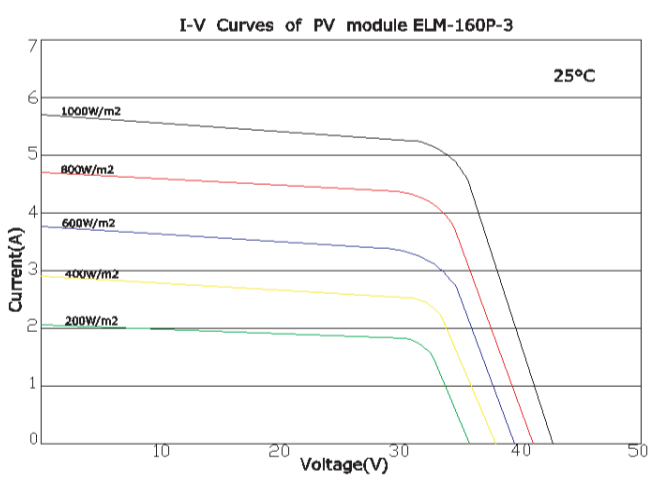


Graph



www.everlight-solar.com

www.everlight-solar.com



www.everlight-solar.com

www.everlight-solar.com